

PermiFlow™

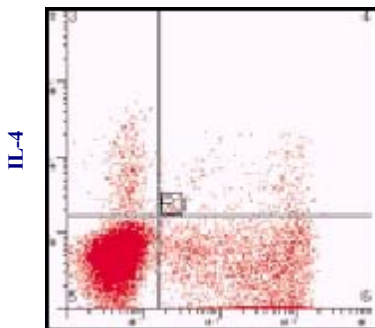
One Step—One Hour—Fixation and Permeabilization Reagent

PermiFlow offers increased versatility, sensitivity and specificity for intracellular, molecular and viral pathology detection systems and flow cytometry including ...

- RNA & DNA Preservation, Detection and Analysis
- Real Time PCR in situ (FISNA)
- In Situ PCR/RT-PCR
- Maintains RNA and DNA for downstream applications following flow sorting
- Intracellular Cytokine Staining
- Ultra-sensitive Fluorescent in situ Hybridization
- Antigen Detection
- Apoptosis
- Rare Event Detection

PRESERVES mRNA

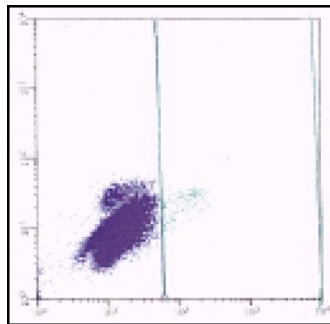
Cellular morphology preserved for cytologic, slide-based and microscopic evaluation and testing



IFN-GAMMA

Intracellular Cytokine Staining

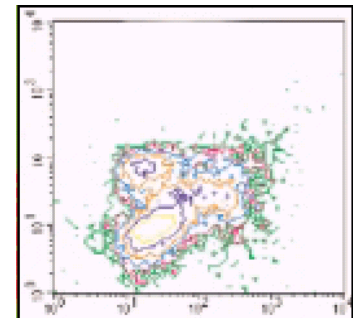
Courtesy of Ken Pennline, PhD. Esoterix, Inc.



HIV-1 DNA

In Situ PCR

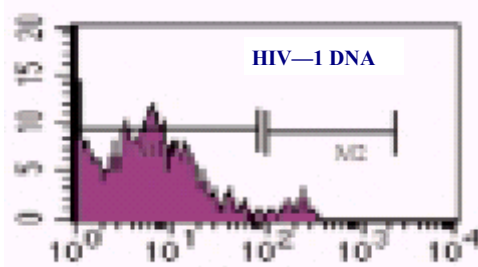
Patterson, B.K. J. Virol, 1995, 69: 4316-4322



HIV-1 RNA

Ultra-Sensitive Fluorescence In Situ Hybridization

Patterson, BK, et al Lancet, 1999,353:211-212; Aids, 1999, 13:1607-66



Real Time PCR in Situ (FISNA)

Patterson, BK et. al
Nucleic Acids Res
1996, 24:36

PermiFlow comes in two convenient kits with detailed protocols and reagents to optimize your applications:

- PermiFlow Intracellular Antigen/DNA/RNA Detection Kit
 - 100 tests
- PermiFlow Rare Event Detection Kit
 - 10 tests (or 500 standard Flow Cytometry assays)



For More Information Contact: www.invirion.com
Invirion Diagnostics, LLC
1900 Spring Road Suite 200
Oak Brook, IL 60523
Phone, 630-954-2875 FAX: 630-954-2874

invirion