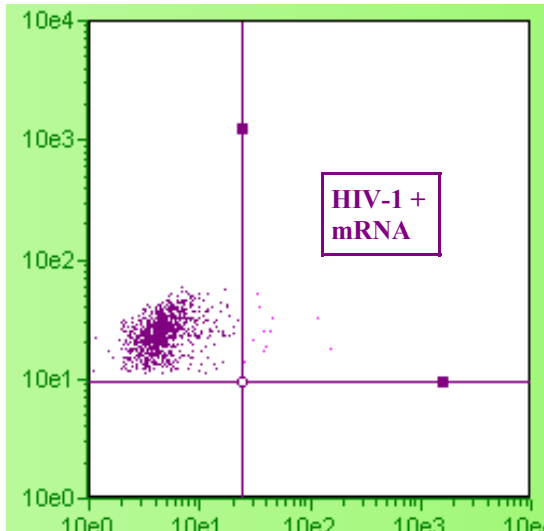
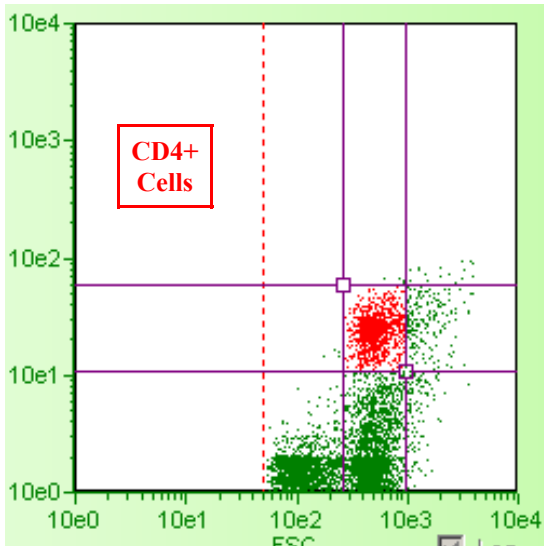


VIROTECT™ ONE

HIV-1 IN CELL DETECTION SYSTEM

Quantify and Correlate CD4 Counts to Plasma Viral Load in One Assay



Quantification of HIV-infected CD4 cells and HIV-1 gag-pol mRNA correlation with plasma viral load using ViroTect HIV detection system. Performed on the Guava PCA system

SIMPLICITY

- ViroTect^{ONE} determines HIV-infected CD4-positive T-Cell populations and correlates to Plasma Viral Load level indices in **ONE simple Assay, ONE simple Report**—on whole blood.
- Detects persistent HIV-1 replication in HIV-1 individuals with undetectable viral load in both Clade B and Clade C.
- Easy-to-read data is expressed as a percent of HIV+ cells that correlates with established plasma viral load levels.

SENSITIVITY

- Combines the sensitivity of immunophenotyping with the power of fluorescent-based *in situ* hybridization to detect HIV-1 mRNA at 5-10 copies per cell by Flow Cytometry.
- Provides critical patient-specific information to determine the efficacy of HIV-1 therapeutics such as HAART therapy, vaccines and entry inhibitors, in the cell.

SIMPLE-FAST RESULTS

- Assay Time - Less than 1 Hour compared to days for complex PCR-based assays for plasma viremia.
- **Assay performed on Whole Blood**—requires no spinning or additional preparation.
- Patient friendly—Requires only a 250 µl whole blood sample.
- Does not require dedicated equipment.

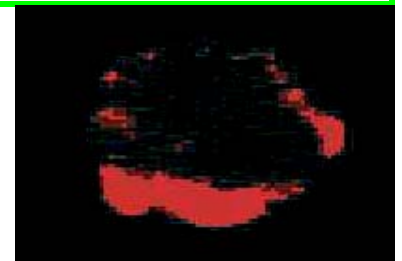
VERSATILE

- Used with cell lines, PBMC's, and cell suspensions including lymph nodes, thymus and tonsils.

Complete Test Kits include:

all reagents, labeled probes and system-optimized antibodies.

- Product Number: 99020, 100-Test Kit



For More Information Contact:
Invirion Diagnostics, LLC
1900 Spring Road, Suite 200 Oak brook, IL 60523
Phone, 630-954-2875 Fax, 630-954-2874

www.invirion.com

Diagnostics, LLC