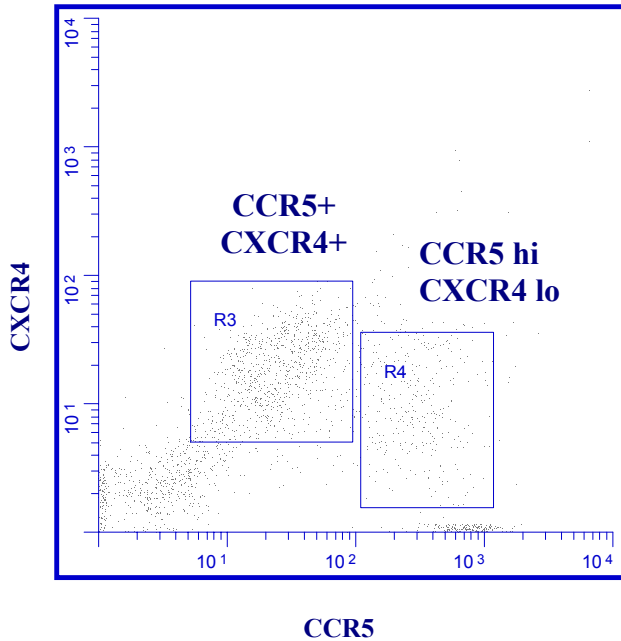


# VIROTECT™

# TROPISM Assay For HIV-1

The Only Tropism Assay for HIV to Detect Tropism Shift



### ULTRA SENSITIVITY

- Detects persistent HIV-1 mRNA in cells unequivocally identified by up to 3 immunophenotypic markers.
- Detects persistent HIV-1 replication in HIV-1 individuals with undetectable viral load.
- Combines the sensitivity of immunophenotyping with the power of fluorescent-based *in situ* hybridization to detect HIV-1 mRNA at 5-10 copies per cell.
- Specifically identifies CCR5 and CXCR4 receptors blocked by inhibitors.

### ULTRA SPECIFICITY

- Determines and quantifies specific HIV load in T-Cell populations, macrophages and monocytes (as HIV replication can vary in different cell types and response to therapy may be cell-type dependent).
- Provides critical cell-specific information to determine the efficacy of HIV-1 therapeutics such as HAART therapy, adoptive transfer of HIV-1-specific CD8 T-Cells, vaccines and entry inhibitors, in the cell.

### VERSATILE

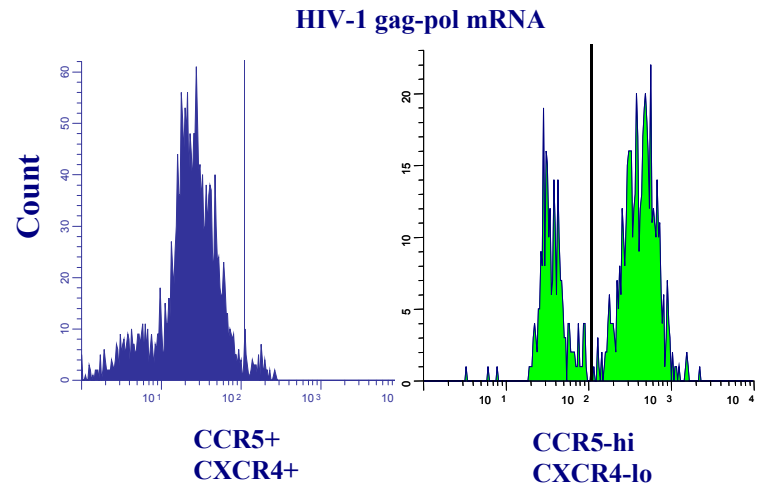
- Used with cell lines, PBMC's, and cell suspensions including lymph nodes, thymus and tonsils. Cellular morphology preserved for cytopathological evaluation.

### SIMPLE-FAST RESULTS

- Assay type, Flow Cytometry
- Total assay time, 3 Hrs
- No dilutions or optimization steps required.
- All probes and antibodies are system optimized and come conjugated and pre-diluted.
- Single-vial antibody cocktail:
- CD4/CCR5/CXCR4

### COMPLETE SYSTEM — all reagents included

- 100-Test Kit, Product Number, 99500



In cell detection of HIV-1 mRNA using ViroTect TROPISM Assay for HIV-1 in PBMCs

For More Information Contact: [www.invirion.com](http://www.invirion.com)  
Invirion Diagnostics, LLC  
1900 Spring Road, Suite 200 Oak Brook, IL 60653  
Phone, 630-954-2875: Sales/Tech Support, 866-352-TEST

**invirion**  
DIAGNOSTICS, LLC